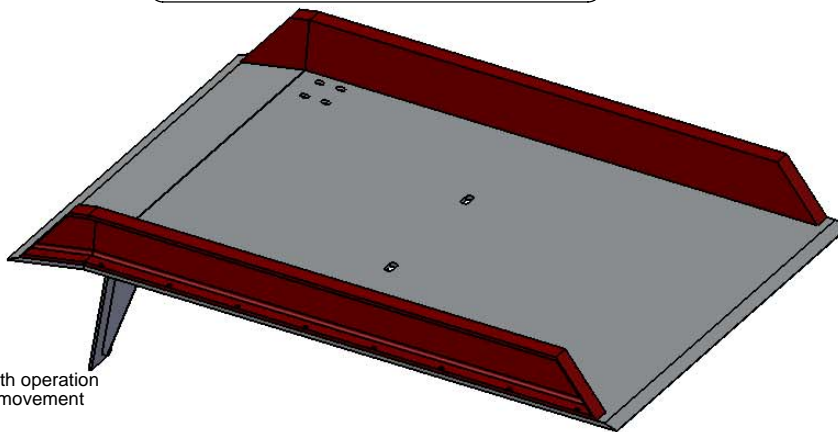


Dockboard Options

Standard



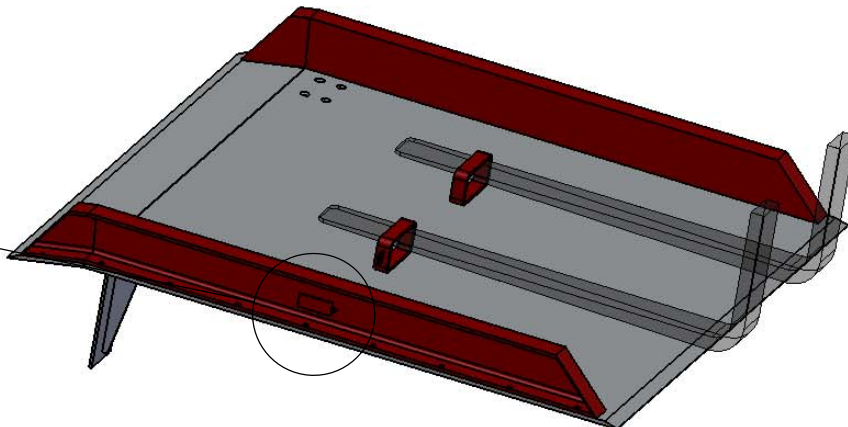
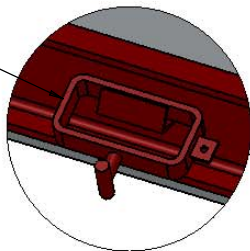
Standard Dockboard features:

- Anti-slip treadplate finish
- Crowned (10°) & bevelled for smooth operation
- One pair of locking legs to prevent movement
- Steel safety side curbs

Fork Truck Lifting Handles (FTH-1)

- Strongly recommended for all Dockboards due to weight

Handle in stored position

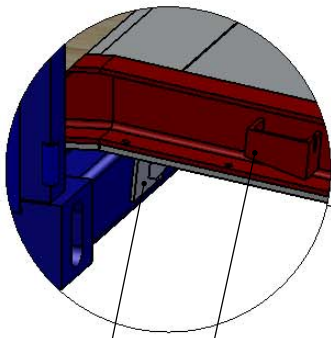


Forktruck Lifting Handles modification features:

- Handles are placed through slots in plate, and rotated 90° for movement with FLT.
- Once the plate is in position, the handles are stored over the loop type lifting handles.
- Handles secured to plate with chain to prevent separation/loss.

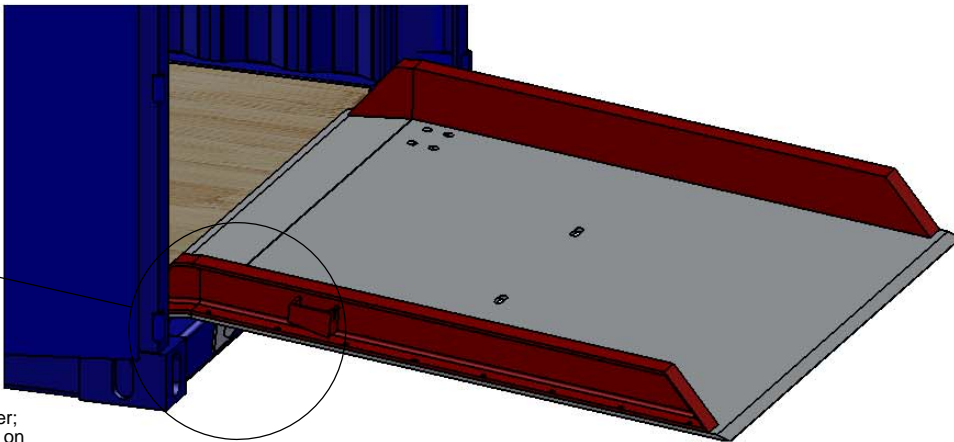
Note: Securing chains omitted for clarity.

Ground Level Loading Fittings (GLF-1)



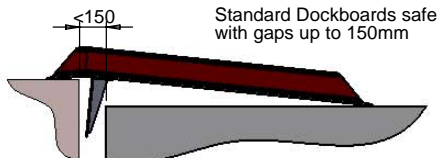
Short (5" / 125mm) locking legs

1830mm length of safety chain to hook onto container; tensioned through keepers on each side of Dockboard

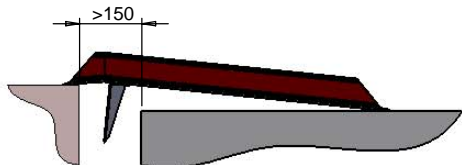


Note: Securing chains omitted for clarity.

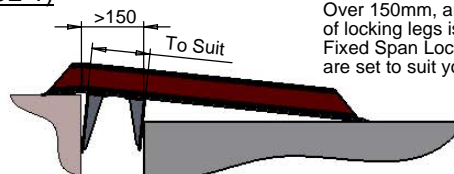
Fixed Span Locking Legs (FSL-1) & Adjustable Span Locking Legs (ASL-1)



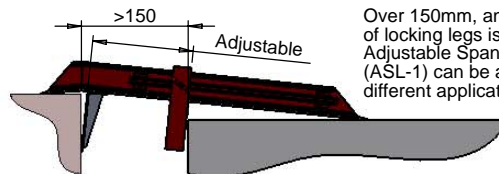
Standard Dockboards safe with gaps up to 150mm



Over 150mm there is a significant risk of the board separating from vehicle - this is not recommended.



Over 150mm, an additional pair of locking legs is recommended. Fixed Span Locking Legs (FSL-1) are set to suit your application.



Over 150mm, an additional pair of locking legs is recommended. Adjustable Span Locking Legs (ASL-1) can be adjusted to suit different applications.



Contact us now for assistance selecting the correct equipment for your application.